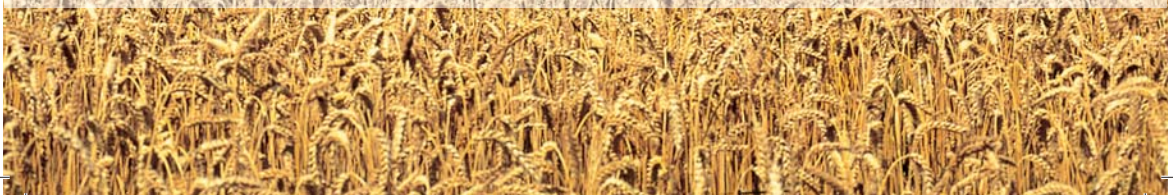




REACH



**Information for our
customers**





The background to REACH



With the best interests of consumers in mind, the European Union decided that the handling and use of chemical substances should be made as safe as possible.

Work started in 2001, when the European Commission unveiled a “White Paper” outlining its chemicals policy. In October 2003, its draft proposal for a new European legal framework - the REACH system - was adopted.

The acronym REACH stands for the Registration, Evaluation and Authorisation of Chemicals. Following a long-winded and in part controversial legislative procedure, the REACH regulation came into force on 1 June 2007.

In accordance with the principle of the reversal of the burden of proof, REACH transfers responsibility for checking chemical safety to those who manufacture and import such products in the EU. Henceforth, these parties have to provide conclusive proof that their products are safe to use and will put neither the health of those processing or using them, nor the environment, at risk.



Registration and deadlines

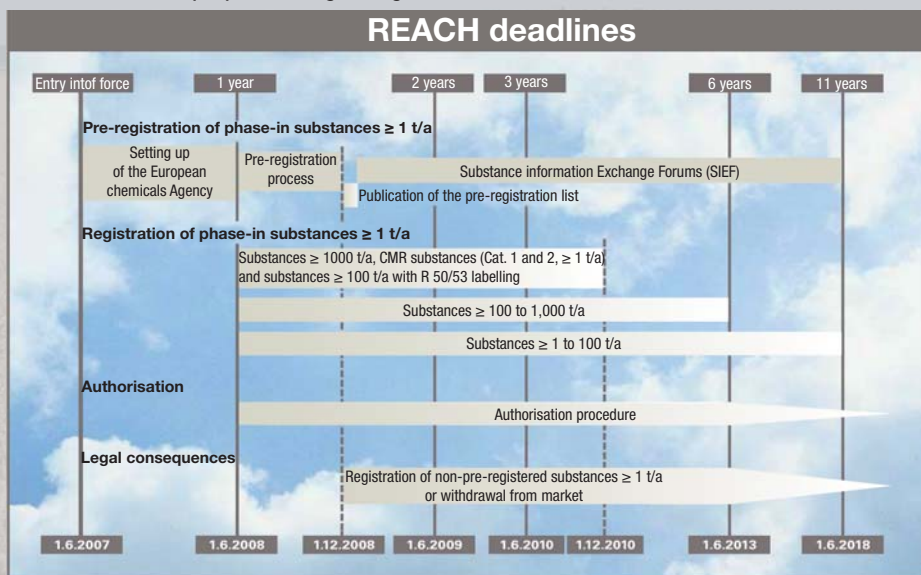
In order to satisfy this precautionary principle, REACH requires that over a period of eleven years, the approximately 30,000 chemical substances found on the European market be registered. Any substances which are not registered will be banned from downstream use or sale. Within this time, all “distributors”, in other words, manufacturers or importers producing or introducing a substance into the area under the jurisdiction of European law in quantities of 1 tonne per year or higher, must register with the European Chemicals Agency – the ECHA – in Helsinki.

To this end, they must submit a technical dossier indicating the essential properties of the substance concerned, its classification and label as well as its purpose, along with guide-

lines for its safe use. Substances of very high concern (these include carcinogenic, mutagenic and substances toxic to reproduction, as well as those which become concentrated in the environment) will in addition need to undergo an official authorisation procedure. The authorisation system will impose a duty upon the companies concerned to develop alternative products.

MOTIP DUPLI has already stopped using such substances.

The registration deadlines have been set specifically on the basis of quantity (in what are known as tonnage ranges):





REACH from the point of view of the downstream user



As well as manufacturers, the registration process affects those who import and/or distribute a substance covered by the regulation within the EU.

Within the deadlines specified above and compliant with the quantity ranges indicated, they too must assess the potential risks posed by the substances they import, identify appropriate measures to manage these risks and inform the consumers of such substances accordingly.

MOTIP DUPLI purchases its raw materials almost exclusively within the EU. In this respect, as what is known a “downstream user”, we are not directly affected by the registration process.

Pre-registration

A pre-registration phase has been set for substances which are already on the market (known as “phase in substances”).

This started on 1 June 2008 and will end on 30 November 2008. During this time, parties obliged to register must submit details of their identity, the identity of the substance concerned and the applicable registration deadline as appropriate for the tonnage range to the EHCA.



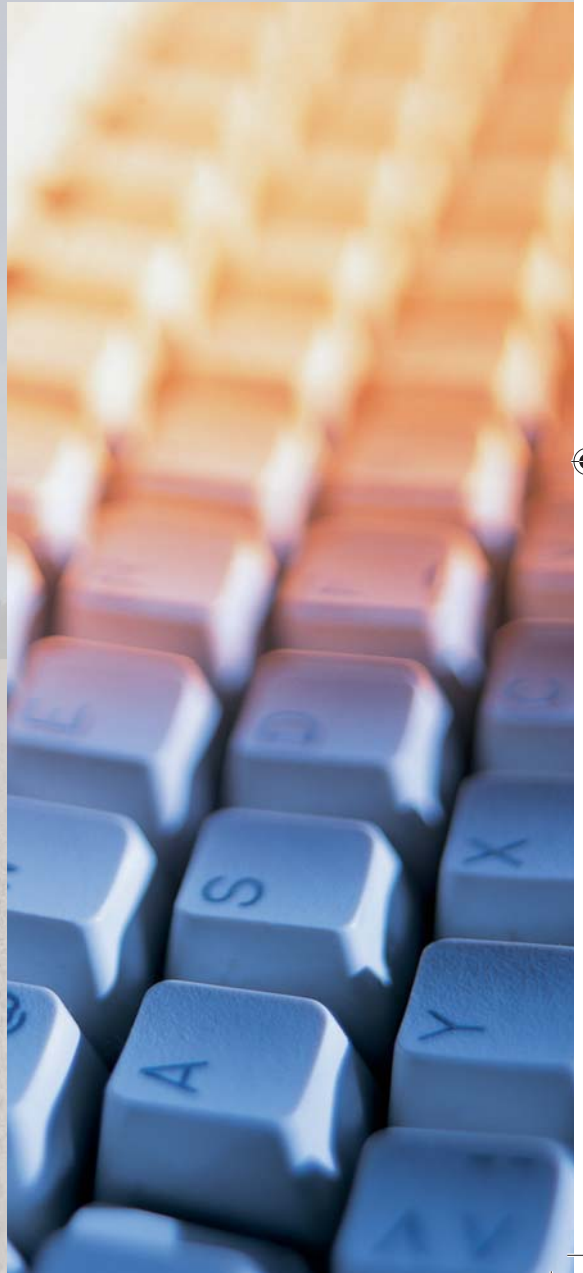


What obligations currently need to be met under REACH?

Since 1 June 2007, safety data sheets compliant with Ordinance 1907/2006 Article 31 have had to be drafted. Amongst the requirements is the restructuring of the data declared (e.g. to include an e-mail address for a contact person and modification of the content of Sections 2 and 3).

MOTIP DUPLI has already restructured its safety data sheets so that they are compliant with REACH requirements.

REACH-compliant safety data sheets for all products can be downloaded from www.motipdupli.com in English, French and German. Data sheets can be provided in other languages on request.



And what do you - our loyal customers - need to be aware of?



All users must check that their specific use of a substance is covered by the corresponding safety data sheet to be submitted by the manufacturer in the context of the impending registration process. We are already dealing with this for you.

We will inform you in good time of changes or modifications affecting our products of which you need to be aware.

Sources of information about RE-

The EU's website
http://ec.europa.eu/enterprise/reach/index_en.htm.

As well as the text of the law, you will find links to many other sources of information here.

Please also visit
<http://www.reach-net.com>.
Select "REACH-Wissensdatenbank" to access an FAQ section addressing various issues associated with REACH (this site is only available in German).

Contact the REACH network for Baden-Württemberg at reach@baden-wuerttemberg.de.

The homepage of the European Chemicals Agency (the ECHA) at <http://ec.europa.eu/echa> will provide you with all the information you need about registration and authorisation procedures. The BAUA (the German Federal Institute for Occupational Safety and Health) has set up a further REACH helpdesk at:

http://www.baua.de/de/Themenvon-A-Z/REACH-Helpdesk/REACHHelpdesk.html_nnn=true.

Our activities/services

MOTIP DUPLI has had a REACH project team in place since December 2006. It is made up of members of the board of directors and representatives from individual areas of the business, along with colleagues from our Logistics, IT and Quality Management depart-

ments. We run an information service staffed by employees with specific REACH training. Imported substances of strategic relevance are (pre-)registered within specified deadlines.

The eco nature trail at MOTIP DUPLI GmbH

In an attempt to create a natural habitat for a multitude of plants and animals, in 2002, MOTIP DUPLI started work on an eco nature trail with 11 stops. Meadows with fruit trees, wild flowers and wild hedges were planted, flanked by rainwater collection tanks and pond biotopes. A habitat for insects and amphibians was created, along with nests for tawny owls and homes for birds, birds of prey and bats.

As well as being beautiful to look at, this type of landscaping provides a sanctuary for numerous breeds of native small animals.

The environmentally-friendly policy championed by MOTIP DUPLI GmbH is also of benefit to its employees, since they are able to spend their breaks in close touch with nature.

Pausen naturnah zu verbringen.



Any of our customers with questions about REACH are invited to contact their usual sales representative, who will be delighted to assist them. Furthermore, our REACH officer is also on hand to offer help and advice:

MOTIP DUPLI GmbH
Kurt-Vogelsang-Str. 6
74855 Haßmersheim
Germany

Roland Voßen
Environmental Management
Tel. +49 (0) 6266 75-310
Fax +49 (0) 6266 75-362
e-mail: roland.vossen@dupli-color.de

MOTIP DUPLI GROUP

